

DAE MJ-200c

2" NTEP IP68 NSF61 Lead Free Potable Water Meter, Pulse Output + Couplings, Gallons

[Specification]

Model	MJ-200c
Type	2" National NTEP approval, IP68 Certified, NSF61 Certified, Lead-Free Potable Water Meter with Pulse Output + Couplings (NPT Thread), Multi-Jet.
Pulse Output	1 gallon/pulse, a dry contact (i.e. no voltage) reed switch with 2 wires, 1.5m. The switch may be damaged if input electricity is more than 0.01A, 24V. We shall not be responsible with the result if connecting to third party device which is not certified by DAE.
Unit	US Gallon
Accuracy	+/- 1.5% within normal flow as per AWWA Standard
Certification	NTEP, IP68, AWWA C708, ANSI/NSF 61, ANSI/NSF 372
Max Water Temperature	122F (50C)
Max. Working Pressure	232 psi, exceeding the requirement from AWWA standard 150 psi
Meter Body	NSF61 Certified Lead-Free Bronze
Size	Length without couplings: 11.3 inches Length with couplings: 17 inches Item dimension: 11.3" length, 4.8" wide, 5.6" height
Bore Diameter	2.01 inches (51.1 mm)
Weight	15 lbs.
Flow Rate	Safe Maximum Flow Rate: 160 GPM Recommended Maximum Continuous Flow Rate: 80 GPM Minimum Test Flow Rate: 2 GPM Normal Test Flow Limits: 8-160 GPM
Pressure Drop	0.254 psi @ 20 GPM, 0.986 psi @ 40 GPM, 3.05 psi @ 60 GPM
NSF61 Certification	DAE MJ series water meter is NSF61 certified. CA, VT, MD, LA require all the drinking water meters be NSF61 certified to meet their stringent regulation.
Warranty	2 years

[Feature]

- Horizontal Inline mount with dial facing upward. For the water meter to be installed vertically with water flowing upward, please refer to DAE PD-200 which can be installed in any position, vertically or horizontally, water flowing downwards or upwards, dial facing upwards, downwards or side-way.
- Cloud Metering available with DAE CC2030 Gateway. CC2030 will collect water usage from DAE AMR (for 16 meters) or AMR130AN (for 1 meter) and send them to cloud server through

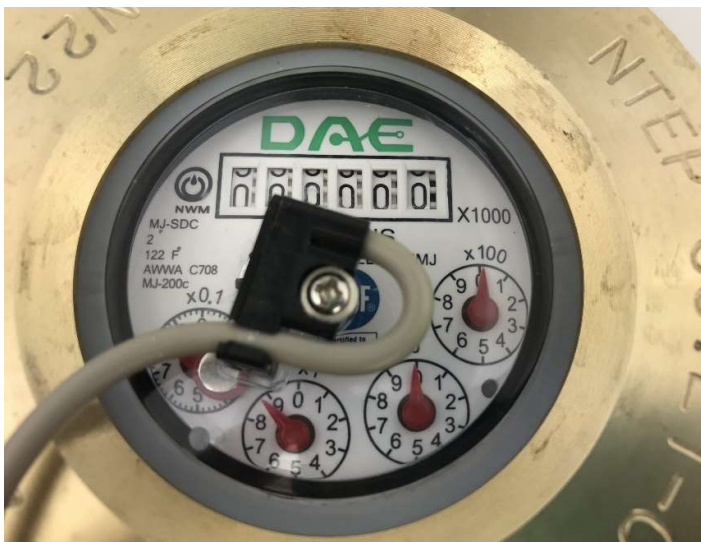
Ethernet. With PC, cell phone, the landlords can see real time data, monthly water usage & billing reports to their tenants. If there is abnormal usage (ex. Broken piping), an email alert will be sent to your cell phone. No IT guy required. Just connect wires as per a simple picture (see video) & ready to go.

- Ready for use with CO-10 (Electronic Pulse Counter) or CO-10 KIT - An inexpensive remote reading solution. Can also use with DAE AMR130 (Auto Meter Reading Module for single water meter) and AMR (for 16 water meters) for remote reading.

[Product Pictures]



[Picture 1]



[Picture 2]



[Picture 3]

[How to read the meter?]



The 1st digit from the right has a multiplier of 1000 gallons.

If you see 001234 on the digits, it is 1234000 gallons.

The 1st dial under the digits has a multiplier of 10 gallons. The 3rd dial under the digits is in gallon.

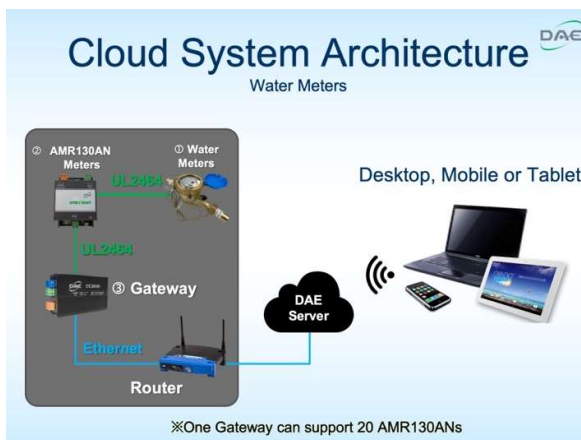
[Remote Reading Solutions]



Inexpensive Remote Reading Solutions

With CO-10 or CO-10 KIT, you can read the water meter usage remotely on the electrical pulse counter.

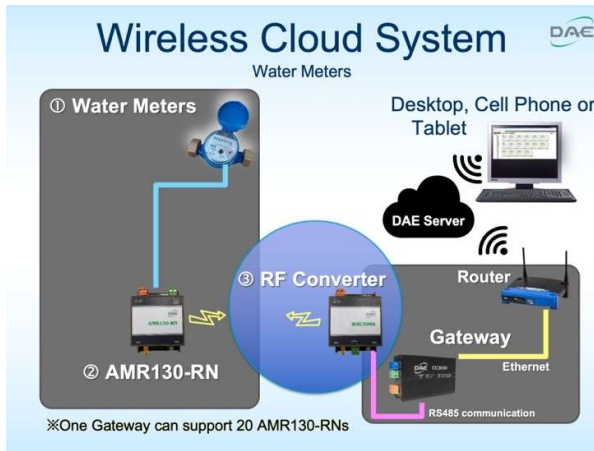
[Cloud Metering for Water]



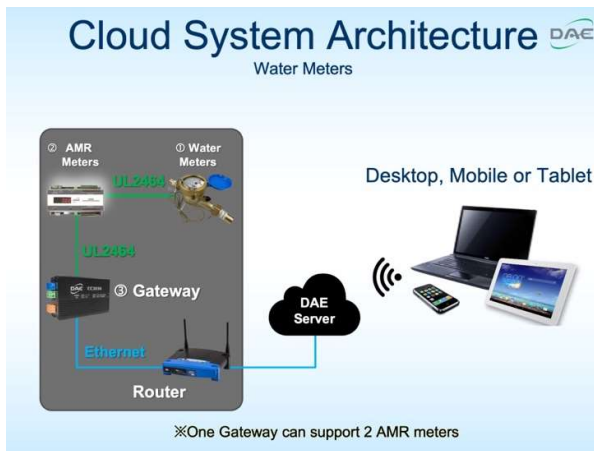
1 DAE CC2030 KIT Gateway + 1 AMR130AN KIT

can read 1 water meter with pulse output (like DAE MJ-200n, PD-200, V-200P, and WP-200P) remotely with cell phone, PC and generate billing report.

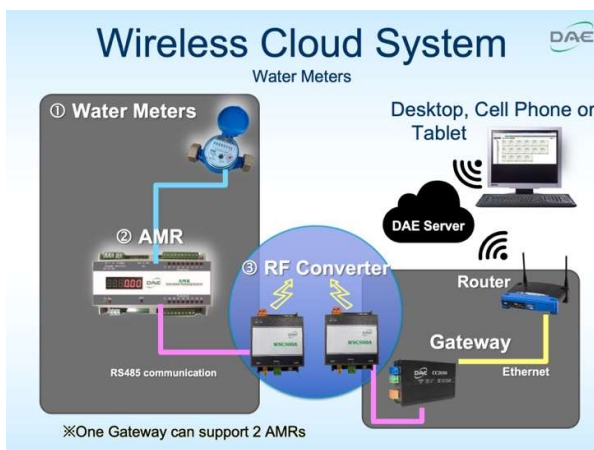
One CC2030 Gateway can monitor 20 meters (water, electricity, and gas).



For existing building, hard to draw cable between AMR130AN (close to 1 water meter) and CC2030 (close to your router), please choose **1 AMR130-RN KIT + 1 CC2030 KIT + 1 WSC500 RF Converters** to connect them wirelessly.



For monitoring up to 16 water meters remotely with cell phone, PC and generate billing report, you will just need **1 AMR KIT + 1 CC2030 KIT**.



For existing building, hard to draw cable between AMR (close to water meter) and CC2030 (close to your router), please choose **1 AMR KIT + 1 CC2030 KIT + 2 WSC500 RF Converter** to connect them wirelessly.

Back Flow Prevention Valve



You must have back-flow-prevention valve in your piping system, or the reading of Cell phone/PC may be more than the reading of water meter due to the backflow. Most of US piping system have back-flow-prevention valve. If not, please install one or refer to Non-Return-Valve (like NRVMJ-200 for MJ-200n) in DAE Controls Website, an in-expensive backflow prevention valve to be installed at the outlet of water meter.

UL2464 Shielded Twisted Pair Cable with Drain Wire, 24 AWG



To securely transfer metering data for DAE Cloud Metering Solutions on Water, please use UL2464 cable to extend connection between water meters (have about 4 ft pulse cable) and AMR130AN or reading of Cell phone/PC may be more than the reading of meter due to exterior interference. With UL2464 cable, connection between meter, AMR130AN can be extended at least 328 ft, and at least 2000 ft between CC2030 and AMR130AN.



DAE B1725 Plastic watertight NEMA 4 IP66 Universal Electrical Enclosure with Mounting Plate

Indoor use only, DAE B1725 watertight enclosure is available for outdoor use.