

DAE AS-75m

3/4" Water Meter, Measuring in Cubic meter, 3/4" NPT Couplings

[Specification]

Model	AS-75m
Type	5/8"*3/4" Turbine Water Meter, Measuring in Cu meter+ 3/4" NPT Couplings
Couplings	Included
Unit	Totalizer Measuring in Cubic meter
Accuracy	+/-1.5% within normal flow as per AWWA Standard
Certification	AWWA C712 and ISO 4064.
Max Water Temperature	104°F (40°C)
Max. Working Pressure	232 psi, exceeding the requirement from AWWA standard 150 psi.
Meter Body	Bronze
Size	Length without couplings: 5.12 inches Length with couplings: 9.31 inches Item dimension: 5.12" length, 3.4" wide, 3" height
Bore Diameter	0.57 inches (14.48 mm)
Weight	4 lbs.
Flow Rate	Maximum Flow Rate: 20 GPM (4.542 cu m/h) Normal Flow Rate: 10 GPM (2.271 cu m/h) Minimum Flow Rate: 0.25 GPM (0.057 cu m/h)
Pressure Drop	0.0044 psi @ 5 GPM (1.136 cu m/h) 2.150 psi @10 GPM (2.271 cu m/h)
Mount	Horizontal Inline mount with dial facing upwards. For the water meter to be installed vertically with water flowing upward, please refer to V-75. Or PVM-75, VM-75P which can be installed in any position, vertically or horizontally, water flowing downwards or upwards, dial facing upwards, downwards or side-way.

[Feature]

- 8 digits register counter. The 1st digit from the right is in liter or one thousandth cu meter (*0.001 cu meter). The dial is in 0.1 liter or ten hundredth cu meter (*0.0001 cu meter). For example, if you see 00001234 on the register, it is 1.234 cu meter.
- The register head can be freely rotated for convenient viewing
- The DAE meters have been tested by our QC inspectors in the production line to certify their quality. Therefore, the reading will not be zero.
- DAE AS series is single jet water meter with bore size 0.57 inch.
- Factory calibration certificates available for government contracts.
- DAE AS series water meters are not NSF61 certified. It is DAE MJ series and PD series water

meters which are NSF 61 certified. California, Vermont, Maryland and Louisiana state laws require that all the potable water meters used their states be NSF61 certified.

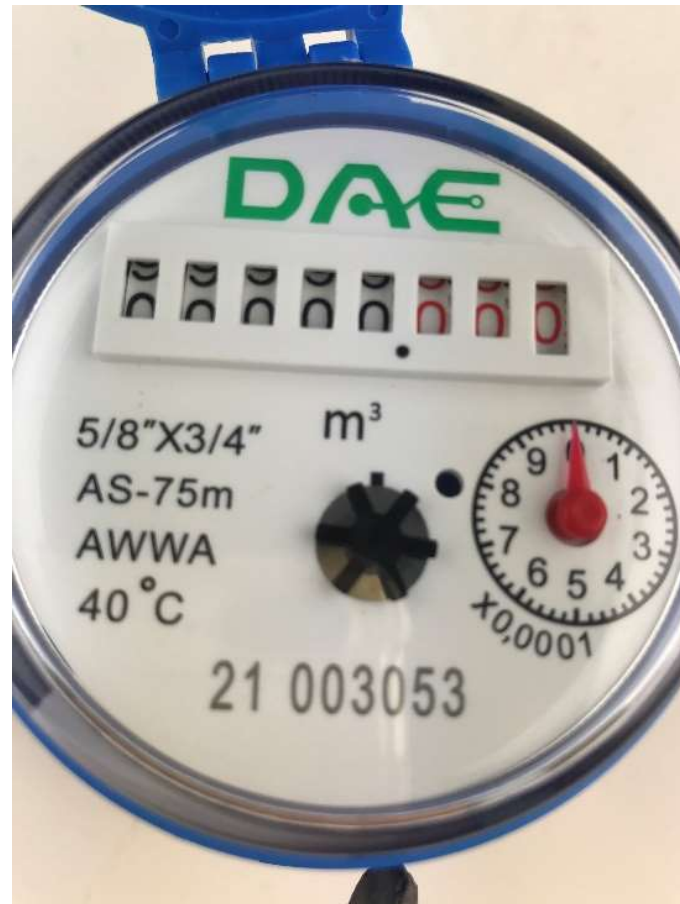
- To install the DAE 3/4" water meter with the 3/4" garden hose at both ends, you will need 2 DAE CG-75 Fitting ([amazon.com/dp/B09FG4LY75](https://www.amazon.com/dp/B09FG4LY75)).
- 2 years warranty from the seller.

[Remote Reading Solutions]

- Refer to 6th picture, when upgraded to AS-75mP, option available for cloud metering system with CC2030 Gateway. DAE CC2030 Gateway will get the water consumptions from (Auto Meter Reading Module for single water meter) or AMR (Auto Meter Reading Module for 16 water meters) and send them to the cloud (DAE server) through Ethernet. With PC or cell phone or tablet, the building owners or property managers will therefore be able to get access to real time data as well as the monthly water consumption and billing reports to their tenants.
- For AS-75mP option available to use with CO-10 KIT or CO-10 Electronic Pulse Counter - An inexpensive remote reading solution Please refer to 5th picture.
- For AS-75mP option available for wireless remote reading with DAE WSC500 RF converters. Please refer to 7th picture.



[Picture 1]



[Picture 2]



[Picture 3]



[Picture 4]

Remote Reading with Pulse Counter

An Inexpensive Solution

Note: Only meters with pulse output like AS200U-75P are eligible to be connected to CO-10.

**Electronic
Pulse Counter
CO-10**



info@daecontrols.com, (248) 635 3708, www.daecontrols.com

[Picture5]

Cloud System Architecture

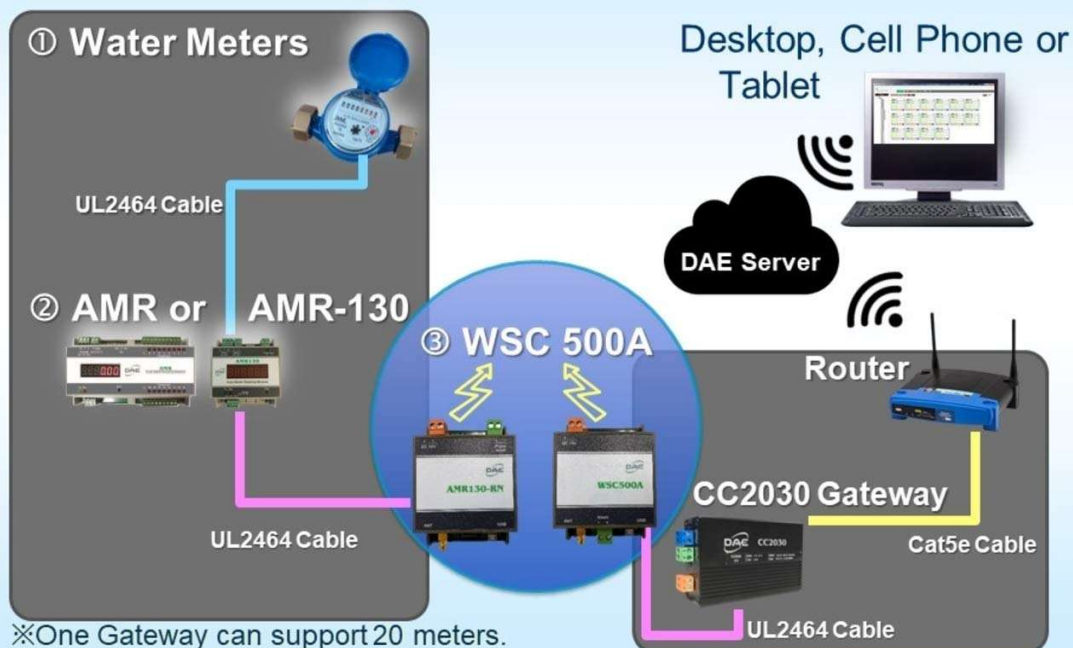
Water Meters



info@daecontrols.com, (248) 635 3708, www.daecontrols.com

[Picture6]

Wireless Cloud System Architecture - Water



info@daecontrols.com, (248) 635 3708, www.daecontrols.com

[Picture 7]