

DAE MJn-200

2" Water Meter, Pulse Output + Couplings, Gallons

[Specification]

Model	MJn-200
Type	2" Water Meter with Pulse Output + Couplings, Measured in Gallons, Multi-Jet.
Couplings	Included (NPT Thread)
Pulse Output	1 gallon/pulse, a dry contact (i.e. no voltage) reed switch with 2 wires, 1.5m. The switch may be damaged if input electricity is more than 0.01A, 24V. We shall not be responsible with the result if connecting to third party device which is not certified by DAE.
Unit	US Gallon
Accuracy	+/- 1.5% within normal flow as per AWWA Standard
Standard	AWWA C708, for clean water only.
Max Water Temperature	122°F (50°C)
Max. Working Pressure	232 psi, exceeding the requirement from AWWA standard 150 psi.
Meter Body	Bronze
Size	Length without couplings: 11.8 inches Length with couplings: 17.3 inches Item dimension: 11.8" length, 5" wide, 6.7" height.
Bore Diameter	2.04 inches (51.7 mm)
Weight	14.4 lbs.
Flow Rate	Safe Maximum Flow Rate: 160 GPM Maximum Continuous Flow Rate: 80 GPM Minimum Test Flow Rate: 2 GPM Normal Test Flow Limits: 8-160 GPM
Pressure Drop	0.1 psi @ 20 GPM, 1.1 psi @ 40 GPM, 2.4 psi @ 60 GPM

[Feature]

- Mount: Horizontal mount with dial facing upwards. For installing vertically with water flowing upwards, please refer to V-200P. You can also refer to DAE PD-200, which can be able to be installed in any position, vertically or horizontally, dial facing upwards or downwards or horizontally, water flowing downwards or upwards.
- Max.Reading:99,999,999.9 gallons, Min.Reading:0.05 gallons. The last digit has a multiplier of 1000 gallons. For example, if you see 001234 on the digits, it is 1234000 gallons. The 1st dial under the digits has a multiplier of 100 gallons. The 3rd dial under the digits is in gallon. Reading on 2nd picture of the listing is 6.1 gallons.
- The pulse emitter device consists of a plastic housing with Reed Switch and 1.5 m cable with 2 cores in red and black. It is a dry contact (no voltage).

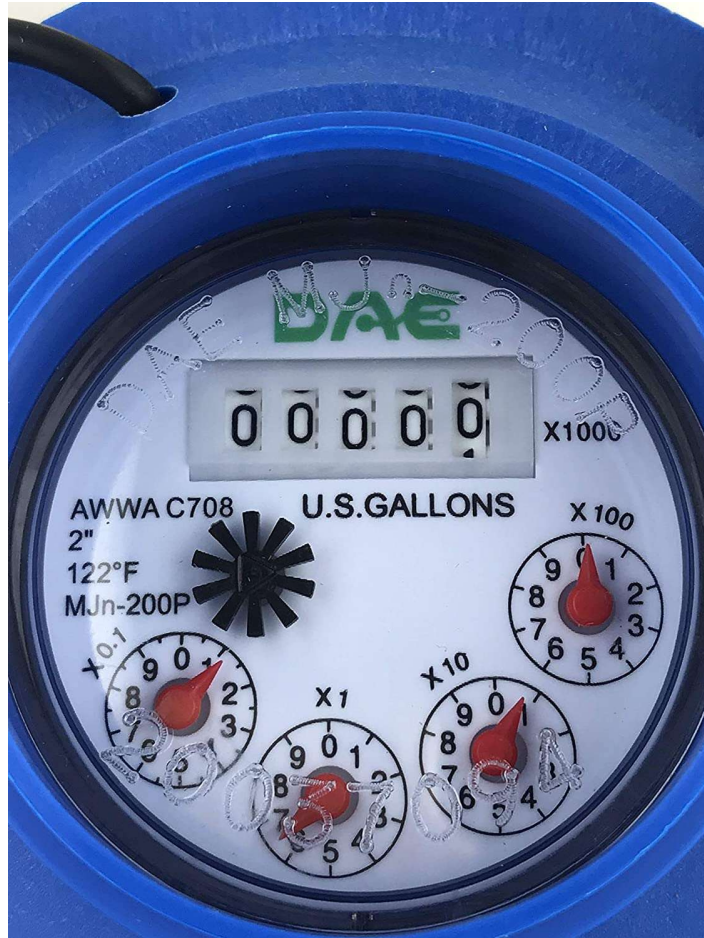
- Factory Calibration Certificates available.
- 2 years warranty from the seller.

[Remote Reading Solutions]

- Refer to 6th picture, available for cloud metering system with CC2030 Gateway. DAE CC2030 Gateway will get the water consumptions from (Auto Meter Reading Module for single water meter) or AMR (Auto Meter Reading Module for 16 water meters) and send them to the cloud (DAE server) through Ethernet. With PC or cell phone or tablet, the building owners or property managers will therefore be able to get access to real time data as well as the monthly water consumption and billing reports to their tenants. If there is abnormal usage (ex. Broken piping), an alert will be sent to your cell phone automatically.
- Ready for use with CO-10 KIT or CO-10 Electronic Pulse Counter - An inexpensive remote reading solution. Please refer to 5th picture.
- Wireless remote reading available with DAE WSC500 RF converters. Please refer to 7th picture.



[Picture 1]



[Picture 2]



[Picture 3]



[Picture 4]

Remote Reading with Pulse Counter **DAE**

An Inexpensive Solution

Note: Only meters with pulse output like AS200U-75P are eligible to be connected to CO-10.

**Electronic
Pulse Counter
CO-10**



info@daecontrols.com, (248) 635 3708, www.daecontrols.com

[Picture 5]

Cloud System Architecture

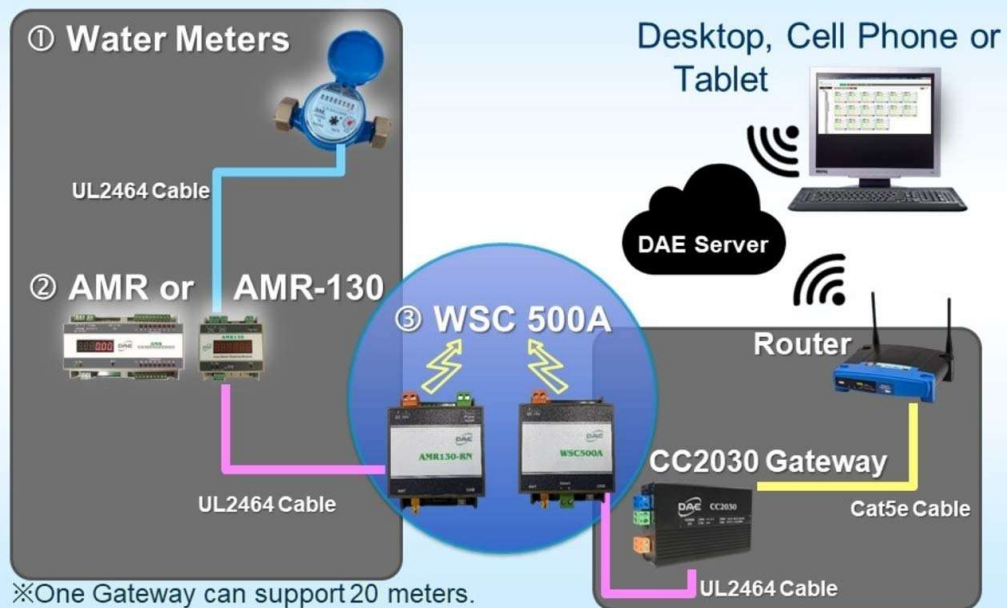
Water Meters



info@daecontrols.com, (248) 635 3708, www.daecontrols.com

[Picture 6]

Wireless Cloud System Architecture - Water



info@daecontrols.com, (248) 635 3708, www.daecontrols.com

[Picture 7]