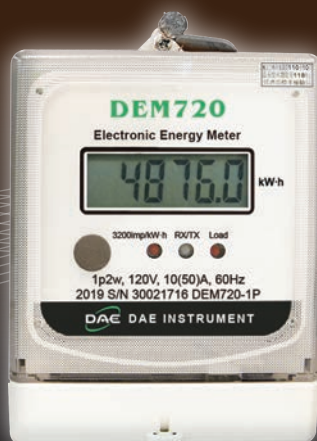




# DEM720-1P

## 1p2w 120V kWh Meter with RS485 communication



Smart for Greenlife!

### Features

- Non-volatile Memory, the stored data is maintained through power outages
- No conversion factor or multiplier required
- Better accuracy than mechanical energy meters
- Highly sensitive with its low starting current, even small power loads are metered accordingly
- Saves on installation cost by obviating the need for power panels
- Anti-tampering design
- Can be mounted directly on the wall, pleasing appearance
- Small wall print and low depth

### Overview

- Conforms to IEC61036 standard
- 6 digit 7 segment LCD display
- Resolution: 0.1 kWh
- Built-in self diagnosis
- Water proof gasket between the top and bottom cover, terminals not included
- Two sets of lead seals: one for the terminal cover and the second for the meter cover itself
- Operating temperature: -40 to 70°C (-40~158°F)

### Applications

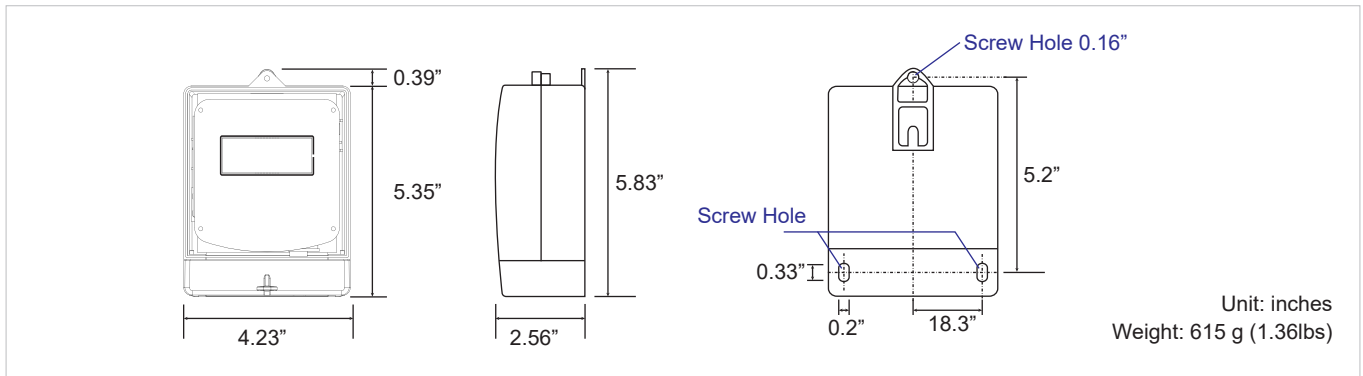
- Rental offices building
- Rental apartments
- School dormitories
- Shopping mall
- Yacht marina
- Temporary housing
- Show rooms
- Market stalls
- Eateries

### Specifications

Models	DEM720-1P
Phase/Wire	1p2w
Voltage & Frequency	AC 120V, 60Hz
Power Consumption	less than 2VA
Display	6 digit 7 segment LCD display
Meter Constant	3200 imp/kWh
Max Current	50A
Max Wire Gauge	30mm <sup>2</sup>
Weight	615g

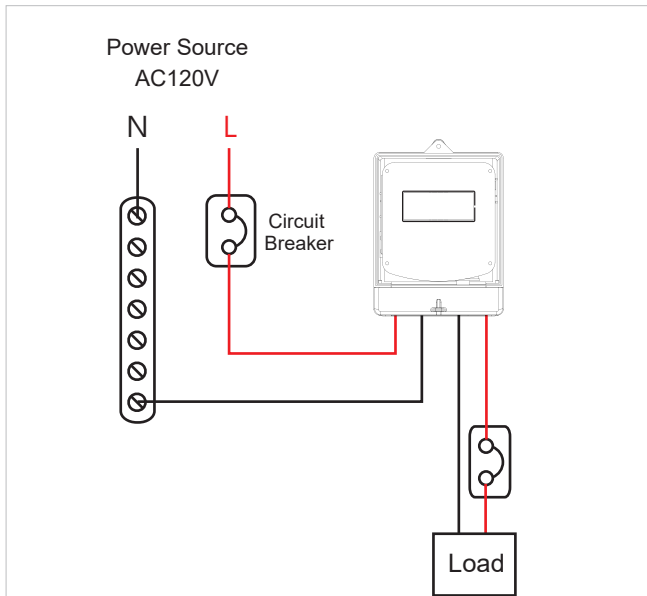
Item	Description
Indicator LEDs	<ul style="list-style-type: none"><li>• Meter Constant</li><li>• Communication Activity</li><li>• Load Status</li></ul>
Environment	Operating: Temperature -40~70°C (-40~158°F), Humidity ≤ 90% RH Storage: Temperature -40~80°C (-40~176°F), Humidity ≤ 90% RH
Production Standard	IEC61036
Mounting	Can either be mounted inside panel or wall mounted
Communication Interface	<ul style="list-style-type: none"><li>• RS485 interface</li><li>• Modbus/RTU protocol</li><li>• Format: 8/n/1</li><li>• Address: 1~254 (default: last 2 digits of serial number)</li><li>• Baud rates: 1200, 2400, 4800, 9600 bps (default: 9600 bps)</li></ul>

## Dimensions

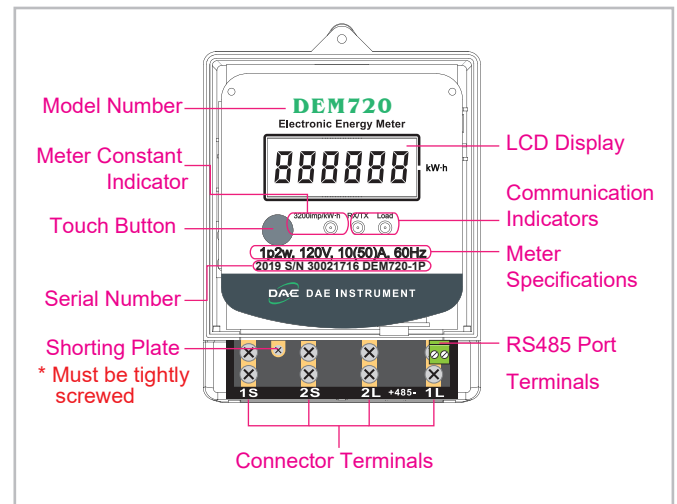


## Wiring Diagram

### DEM720-1P

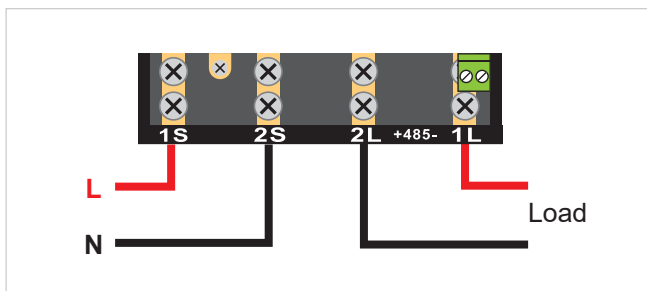


## Front Panel and Terminals



## Terminal Wiring

### DEM720-1P



## Ordering

Models	Description
DEM720-1P	1p2w Energy Meter, 120V, 50A, 60Hz