

DAE Polaris Universal kWh Meter

UL,120/208V, 3P4W (3 hot wire, 1 neutral), 1P3W (2 hot wire, 1 neutral), 1P2W (1 hot wire, 1 neutral), 30-200A, RS485

[Specification]

| | |
|---------------------|---|
| Model | Polaris 2500 |
| Type | Polaris Universal kWh Meter |
| Pulse Output | 1000 pulses per kWh |
| Accuracy | Revenue-grade accuracy (0.5% accuracy, see datasheet in DAE Controls website for details) The accuracy will not be affected when the CTs are mounted up to 2000 feet away from the meter. |
| Demand | Optional (15 minutes interval standard, 30 minutes or 60 minutes intervals available) |
| Certification | UL/CUL Listed, California CTEP Approved (CT-200D3) |
| Display Style | LED |
| Thickness | 2.25 inches |
| Installation Method | Wall Mount |
| Usage | Indoor use only. (DAE Watertight NEMA 4 enclosure is available for outdoor use) |
| Meter Body | Plastic |
| Compatible CT | Split Core CTs DAE CT-5000SB (5000A), CT-3000SB (3000A), CT-2000SB (2000A), CT-1500SB (1500A), CT-1000SB (1000A), CT-600S (600A), CT-400S (400A), CT-200SB (200A), CT-100S (100A) and Solid Core CT-600D9 (600A), CT-400D6 (400A), CT-200D3 (200A). |
| Warranty | Five years |

[Feature]

- UL listed, 30A - 200A Revenue-Grade, Polaris Universal kWh Meter, for 120/208V, 3 phases, 4 wires (3 hot wire, 1 neutral, 3 CTs required, can replace P254-200 or P204-200), or 120/240V, 1 phase, 3 wires (2 hot wire, 1 neutral, 2 CTs required, can replace P153-200 or P103-200), or 1P2W (1 hot wire, 1 neutral, 1 CT required, can replace P152-200 or P102-200), Modbus RTU/RS485 communications.
- Comes with a lower cover which has two 3/4" knockouts to connect the conduits. One in-inline fuse with holder is attached for you to connect hot wire A to VA of the meter. The meter is powered by VA and VN. VB and VC just take the reference of voltage from hot wire B, C. They do not need in-inline fuse.
- Factory calibration certificates available for government contracts.
- Parallel up to three sets of CTs for cumulative reading.
- Non-volatile Memory, the stored data is maintained through power outages.

- No conversion factor or multiplier required.
- Solid core CTs are suggested for new construction or for retrofitting construction when the power can be shut off. Split core CTs are ideal for retrofitting projects without having to disconnect wire terminations.
- Current Transformers (CTs) are not direction sensitive. It does not matter if the contractors install the CTs with wrong direction of current. DAE meters can detect it and compensate it.

[Remote Reading Solutions]

- Please refer to 5th picture. DAE Cloud Metering System available with DAE CC2030 Gateway. DAE CC2030 gateway will get the energy data from DAE electrical meters and send them to the cloud (DAE server) through Ethernet. With PC, cell phone or tablet, the building owners or property managers will therefore be able to get access to real time data as well as the monthly kWh consumption and billing reports to their tenants.
- Wireless remote reading available with DAE WSC500 RF converters (6th picture).



[Picture 1]



[Picture 2]



[Picture 3]



[Picture 4]

Cloud System Architecture

kWh Meters

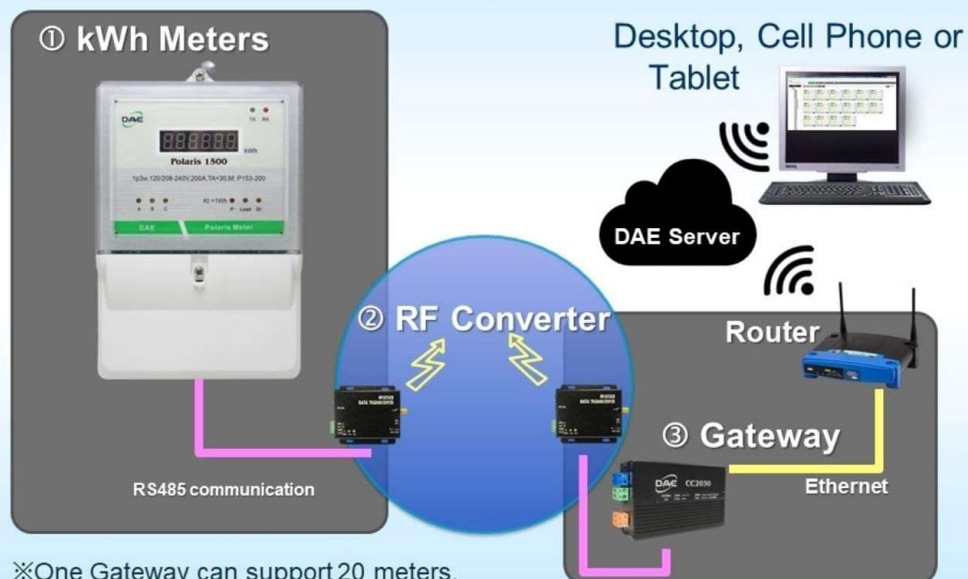


info@daecontrols.com, (248) 635 3708, www.daecontrols.com

[Picture 5]

Wireless Cloud System

kWh Meters



info@daecontrols.com, (248) 635 3708, www.daecontrols.com

[Picture 6]



[Picture 7]