



DAE MJP-150P

Lead Free Potable Plastic Water Meter, 1.5" NPT Couplings, Measuring in Gallon

[Specification]

Model	MJP-150P
Type	1.5" NSF61 Certified, Lead-Free Potable Plastic Water Meter, Pulse Output, NPT Couplings at both ends, Multi-Jet.
Pulse Output	1 gallon/pulse, a dry contact (i.e. no voltage) reed switch with 2 wires, 1.5m. The switch may be damaged if input electricity is more than 0.01A, 24V. We shall not be responsible with the result if connecting to third party device which is not certified by DAE.
Accuracy	+/- 1.5% within normal flow as per AWWA Standard
Certification	Certified by NSF to meet ANSI/NSF 61 for material safety and ANSI/NSF 372 for lead free plumbing as defined by the US Safe Drinking Water Act. Conforms to AWWA C708.
Max Water Temperature	122°F (50°C)
Max Working Pressure	232 psi, exceeding the requirement from AWWA standard 150 psi
Couplings	Lead Free Couplings Included
Meter Body	Lead-Free Plastics (Reliable Polymer from BASF)
Size	Length without couplings: 9.65 inches Length with couplings: 14.76 inches Width: 4.8 inches Height: 5.57 inches
Weight	4.4 lbs.
Flow Rate	Safe Maximum Flow Rate: 100 GPM Recommended Maximum Continuous Flow Rate: 50 GPM Minimum Test Flow Rate: 1.5 GPM Normal Test Flow Limits: 5-100 GPM
Mount	Horizontal Inline mount with dial facing upward. For the water meter to be installed vertically, please refer to PD-150P which can be installed in any position, vertically or horizontally, dial facing upwards or downwards or horizontally, water flowing downwards or upwards.

[Feature]

- Cloud Metering available with DAE CC2030 Gateway. CC2030 will collect water usage from DAE AMR (for 16 meters) or AMR130AN (for 1 meter) and send them to cloud server through Ethernet. With PC, cell phone, the landlords can see real time data, monthly water usage & billing reports to their tenants. If there is abnormal usage (ex. Broken piping), an email alert will be sent to your cell phone. No IT guy required. Just connect wires as per a simple picture (see video) & ready to go.
- Ready for use with CO-10 (Electronic Pulse Counter) or CO-10 KIT - An inexpensive remote reading solution. Can also use with DAE AMR130 (Auto Meter Reading Module for single water meter) and AMR (for 16 water meters) for remote reading.
- Factory Calibration Certificates available. DAE Controls LLC is a Minority Business. Please feel free to get the NMSDC Minority Supplier Certificate from DAE Controls Website.



[How to read the meter?]



The 1st digit from the right has a multiplier of 100 gallons.

If you see 001234 on the digits, it is 123400 gallons.

The 1st dial under the digits has a multiplier of 10 gallons. The 2nd dial under the digits is in gallon.

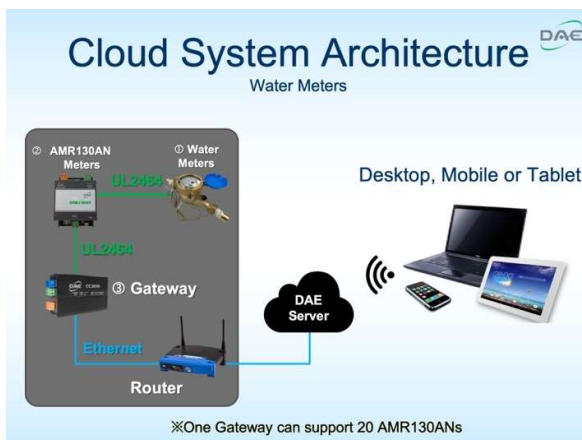
[Remote Reading Solutions]



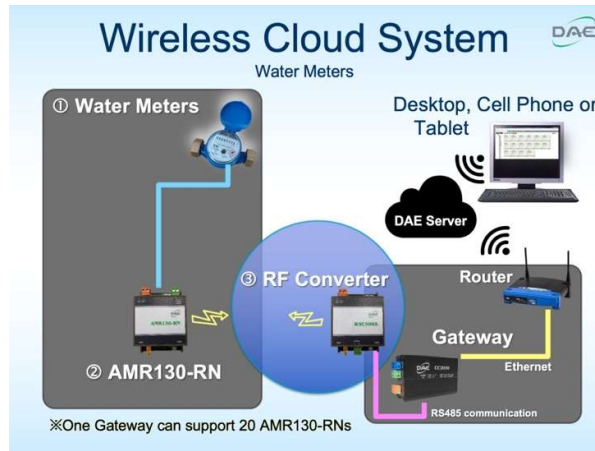
Inexpensive Remote Reading Solutions

With CO-10 or CO-10 KIT, you can read the water meter usage remotely on the electrical pulse counter.

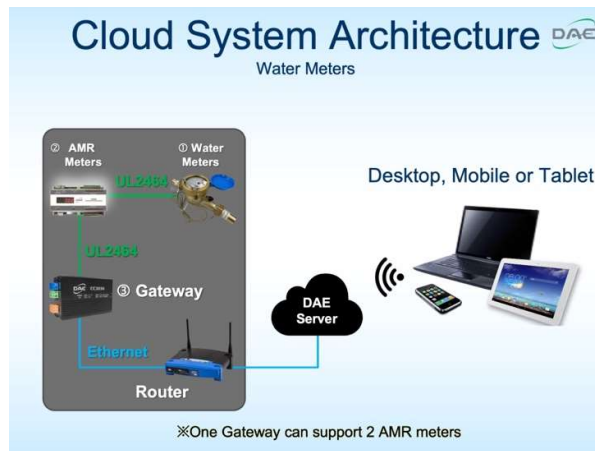
[Cloud Metering for Water]



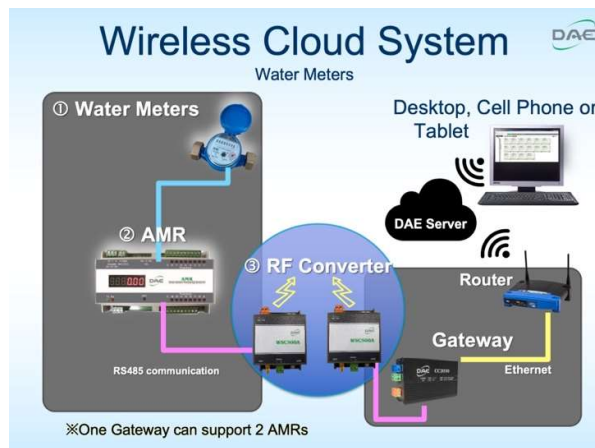
1 DAE CC2030 KIT Gateway + 1 AMR130AN KIT can read 1 water meter with pulse output (like DAE MJ-100n, PD-100, V-100P, VM-100P, and WP-200P) remotely with cell phone, PC and generate billing report. One CC2030 Gateway can monitor 20 meters (water, electricity, and gas).



For existing building, hard to draw cable between AMR130AN (close to 1 water meter) and CC2030 (close to your router), please choose **1 AMR130-RN KIT + 1 CC2030 KIT + 1 WSC500 RF Converters** to connect them wirelessly.



For monitoring up to 16 water meters remotely with cell phone, PC and generate billing report, you will just need **1 AMR KIT + 1 CC2030 KIT**.



For existing building, hard to draw cable between AMR (close to water meter) and CC2030 (close to your router), please choose **1 AMR KIT + 1 CC2030 KIT + 2 WSC500 RF Converter** to connect them wirelessly.

Back Flow Prevention Valve



You must have back-flow-prevention valve in your piping system, or the reading of Cell phone/PC may be more than the reading of water meter due to the backflow. Most of US piping system have back-flow-prevention valve. If not, please install one or refer to Non-Return-Valve (like NRV MJ-100 for MJ-100n) in DAE Controls Website, an in-expensive backflow prevention valve to be installed at the outlet of water meter.

UL2464 Shielded Twisted Pair Cable with Drain Wire, 24 AWG



To securely transfer metering data for DAE Cloud Metering Solutions on Water, please use UL2464 cable to extend connection between water meters (have about 4 ft pulse cable) and AMR130AN or reading of Cell phone/PC may be more than the reading of meter due to exterior interference. With UL2464 cable, connection between meter, AMR130AN can be extended at least 328 ft, and at least 2000 ft between CC2030 and AMR130AN.



DAE B1725 Plastic watertight NEMA 4 IP66 Universal Electrical Enclosure with Mounting Plate

Indoor use only, DAE B1725 watertight enclosure is available for outdoor use.