

DAE AS250U-100P

1" Water Meter with Pulse Output, Measuring in Gallon + Couplings

[Specification]

Model	AS250U-100P
Type	1" Water Meter with Pulse Output, Measuring in Gallon + Couplings
Couplings	Included
Pulse Output	10 Gallon/Pulse, reed switch with 2 wires, 1.5m. Switch may be damaged if input is more than 0.01A, 24V. We shall not be responsible for the result if connecting to third party device not certified by DAE.
Unit	Totalizer Measuring in Gallon, GPM
Accuracy	+/-1.5% within normal flow as per AWWA Standard
Certification	AWWA C712 and ISO4064.
Max Water Temperature	104°F (40°C)
Max. Working Pressure	232 psi, exceeding the requirement from AWWA standard 150 psi
Meter Body	Bronze
Size	Length without couplings: 6.3 inches Length with couplings: 11.125 inches Item dimension: 6.3" length, 3.7" wide, 3" height
Weight	5.5 lbs.
Flow Rate	Maximum Flow Rate: 50 GPM (11.4 m³/h) Normal Flow Rate: 25 GPM (5.7 m³/h) Minimum Flow Rate: 3/4 GPM (0.17 m³/h)
Pressure Drop	0.145 psi @ 5 GPM(1.136 cu m/h), 1.305 psi @15 GPM(3.408 cu m/h), 3.916 psi @ 25 GPM(5.7 m³/h)
Mount	Horizontal Inline mount with dial facing upward

[Feature]

- 8 digits register counter. The 1st digit from the right is in gallons (*1 gallon). The dial is in one tenth gallons (*0.1 gallons). For example, if you see 00001234 on the register, it is 1234 gallons. Reading on 1st picture of the listing is 67.37 Gallons.
- The register head can be freely rotated for convenient viewing
- DAE AS series is single jet water meter with bore size 0.77 inch.
- Factory calibration certificates available for government contracts.
- 2 years warranty from the seller.
- If you have continuous flow with 50 GPM, we would suggest that you choose 1-1/2" water meter like DAE AS320U-150P or MJ-150

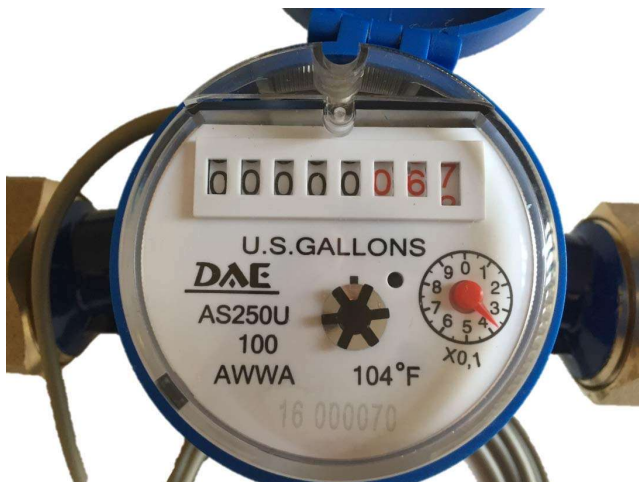
- For the water meter to be installed vertically with water flowing upward, please refer to V-100P or VM-100P which can be installed in any position, vertically or horizontally, water flowing downwards or upwards, dial facing upwards, downwards or side-way.
- The definition of lead free in each state is different. DAE AS series like AS250U-100P meet the definition of lead free for all the states in US except CA, VT, MD, LA where you have to choose DAE MJ series NSF61 certified water meters like MJ-100 to meet their stringent regulation.

[Remote Reading Solutions]

- Refer to 6th picture, available for cloud metering system with CC2030 Gateway. DAE CC2030 Gateway will get the water consumptions from (Auto Meter Reading Module for single water meter) or AMR (Auto Meter Reading Module for 16 water meters) and send them to the cloud (DAE server) through Ethernet. With PC or cell phone or tablet, the building owners or property managers will therefore be able to get access to real time data as well as the monthly water consumption and billing reports to their tenants.
- Only two wire connection between water meter and AMR or AMR130. It is not required for additional power source.
- Available to use with CO-10 KIT or CO-10 Electronic Pulse Counter - An inexpensive remote reading solution Please refer to 5th picture.
- Available for wireless remote reading with DAE RF converters. Please refer to 7th picture.



[Picture 1]



[Picture 2]



[Picture 3]



[Picture 4]

Remote Reading with Pulse Counter

An Inexpensive Solution

Note: Only meters with pulse output like AS200U-75P are eligible to be connected to CO-10.

**Electronic
Pulse Counter
CO-10**



info@daecontrols.com, (248) 635 3708, www.daecontrols.com

[Picture 5]

Cloud System Architecture

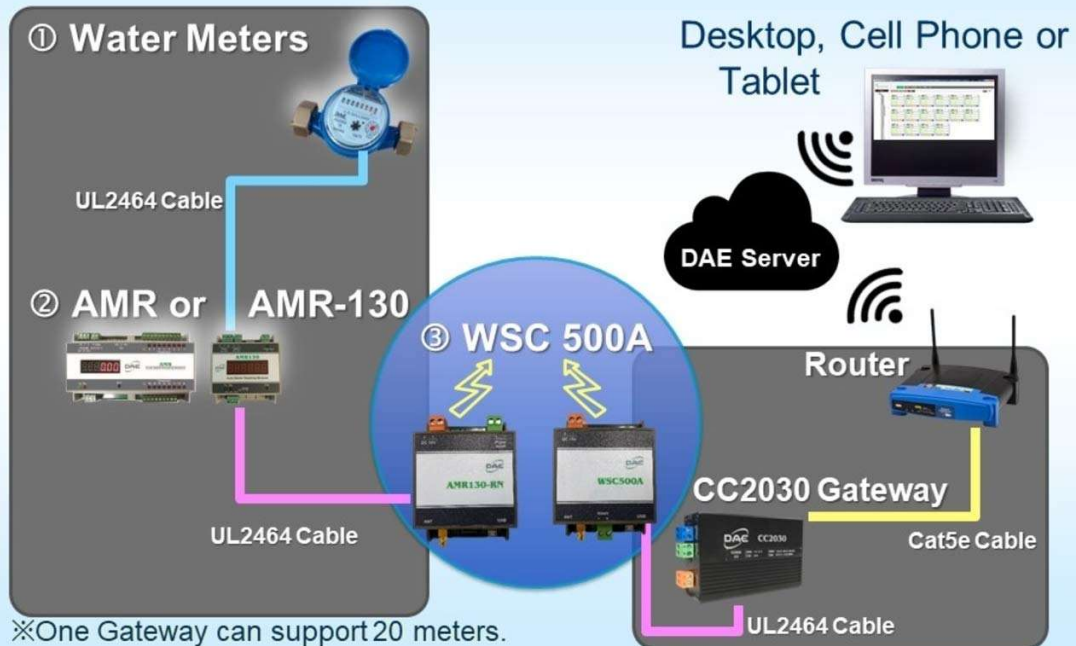
Water Meters



info@daecontrols.com, (248) 635 3708, www.daecontrols.com

[Picture 6]

Wireless Cloud System Architecture - Water



info@daecontrols.com, (248) 635 3708, www.daecontrols.com

[Picture 7]