

Polaris 1500

Single-Phase kWh Meter



Smart for Greenlife!

With Modbus/RTU over RS485 communication!


Advantages

- With Modbus/RTU over RS485 communication (very cost effective as compared with the competitors)
- Foolproof system. DAE meter will be warning if the CTs are installed in the wrong phases
- Polaris meters are not direction sensitive. It does not matter if the contractors install the CT with wrong direction of current. DAE meters can detect it and compensate it
- DAE's CT is exactly the same and exchangeable among all the meters including Polaris 1000, 1500, 2000, 2500, 3000 kWh meters and SMB350 multi-circuit, multi-function meters
- High resolution, Kt = 1Wh (1000 pulses per kWh)
- Very compact current sensors (CTs) and the accuracy will not be affected when the CTs are mounted up to 2000 feet away from the meter
- Very easy installation (not necessary to drill a hole and open the whole cover of the meter)
- Parameters reading with LED display, very clear even in not-well lighted area

Features

- Revenue-grade accuracy
- Non-volatile Memory, the stored data is maintained through power outages
- Parallel up to three sets of CTs for cumulative reading
- Meter can be used in the following configurations:
 - 1-Phase, 2-Wire
 - 1-Phase, 3-Wire
 - 2-Phase, 3-Wire
- UL/CUL Listed
- California CTEP approved for use with solid-core CTs
- Certified by independent test lab to exceed ANSI C12.1 national accuracy standards.

Specifications

Technical and Physical	
Frequency	50 or 60 Hz
Working Voltage	Derived from voltage input
Power Consumption	7VA
Measured Parameters	kWh
Operating Temperature	-20~50°C (-4~122°F)
Relative Humidity	0~95% non-condensing
Accuracy ¹	0.5% from 1% to 100% of rated load
Safety	
Weight	690g
Dimensions	W 5" x H 7.42" x D 2.24" wall-mount (regular terminal cover) W 5" x H 6.50" x D 2.24" wall-mount (special terminal cover)
Communications	
Interface	RS485
Protocol	Modbus/RTU
Interface	1 to 254 (default is last 2 digits of serial number, 01~99=1~99, 00=100)
Protocol	1200, 2400, 4800, 9600 bps (default 9600 bps)
Data Format	8/n/1

¹ Based on DAE solid-core CT @ PF=1

Current Sensors (CTs)

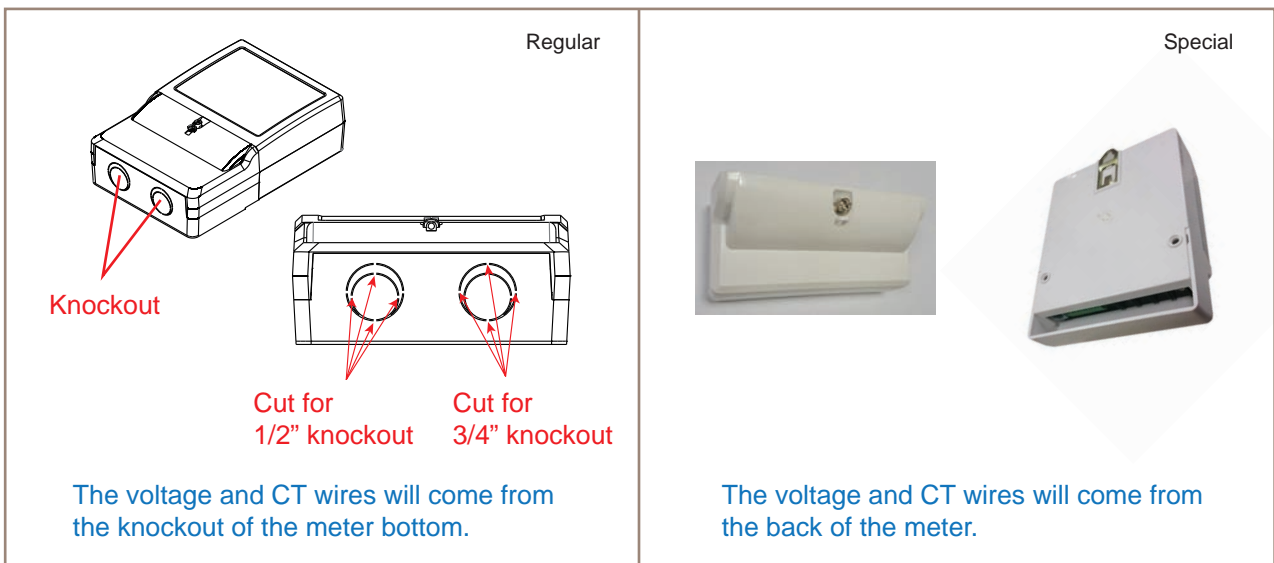


Solid-core

Split-core

Note: Please see CT's datasheet

Terminal Cover



Note: Please specify if special terminal cover is needed when ordering

Ordering Code

Configurations	KIT Ordering Code	Amp	KIT Includes	Polaris Model NO.	CT Model NO.
120V 1- Phase, 2W	P152-200 KIT	200A	1 meter + 1 split-core CT	P153-200	CT-200S or CT-200SB
	P152-400 KIT	400A		P153-400	CT-400S
	P152-600 KIT	600A		P153-600	CT-600S
	P152-200-S KIT	200A	1 meter + 1 solid-core CT	P153-200	CT-200D3
	P152-400-S KIT	400A		P153-400	CT-400D6
	P152-600-S KIT	600A		P153-600	CT-600D9
120/208-240V 1- or 2- Phase, 3W	P153-200 KIT	200A	1 meter + 2 split-core CTs	P153-200	CT-200S or CT-200SB
	P153-400 KIT	400A		P153-400	CT-400S
	P153-600 KIT	600A		P153-600	CT-600S
	P153-200-S KIT	200A	1 meter + 2 solid-core CTs	P153-200	CT-200D3
	P153-400-S KIT	400A		P153-400	CT-400D6
	P153-600-S KIT	600A		P153-600	CT-600D9
208-240V 1- Phase, 2W	P154-200 KIT	200A	1 meter + 1 split-core CT	P154-200	CT-200S or CT-200SB
	P154-400 KIT	400A		P154-400	CT-400S
	P154-600 KIT	600A		P154-600	CT-600S
	P154-200-S KIT	200A	1 meter + 1 solid-core CT	P154-200	CT-200D3
	P154-400-S KIT	400A		P154-400	CT-400D6
	P154-600-S KIT	600A		P154-600	CT-600D9