

Polaris 1000

Single-Phase kWh Meter



Smart for Greenlife!


Advantages

- Foolproof system. DAE meter will be warning if the CTs are installed in the wrong phases
- Polaris meters are not direction sensitive. It does not matter if the contractors install the CT with wrong direction of current. DAE meters can detect it and compensate it
- DAE's CT is exactly the same and exchangeable among all the meters including Polaris 1000, 1500, 2000, 2500, 3000 kWh meters and SMB350 multi-circuit, multi-function meters
- With optional external input for water meter (kWh and water dual in one)
- High resolution, Kt = 1Wh (1000 pulses per kWh)
- Very compact current sensors (CTs) and the accuracy will not be affected when the CTs are mounted up to 2000 feet away from the meter
- Very easy installation (not necessary to drill a hole and open the whole cover of the meter)
- Parameters reading with LED display, very clear even in not-well lighted area

Features

- Revenue-grade accuracy
- Non-volatile Memory, the stored data is maintained through power outages
- Parallel up to three sets of CTs for cumulative reading
- Meter can be used in the following configurations:
 - 1-Phase, 2-Wire
 - 1-Phase, 3-Wire
 - 2-Phase, 3-Wire
- UL/CUL Listed
- California CTEP approved for use with solid-core CTs
- Certified by independent test lab to exceed ANSI C12.1 national accuracy standards.

Specifications

Technical and Physical	
Frequency	50 or 60 Hz
Working Voltage	Derived from voltage input
Power Consumption	7VA
Measured Parameters	kWh
Operating Temperature	-20~50°C (-4~122°F)
Relative Humidity	0~95% non-condensing
Accuracy ¹	0.5% from 1% to 100% of rated load
Safety	
Weight	690g
Dimensions	W 5" x H 7.42" x D 2.24" wall-mount (regular terminal cover) W 5" x H 6.50" x D 2.24" wall-mount (special terminal cover)

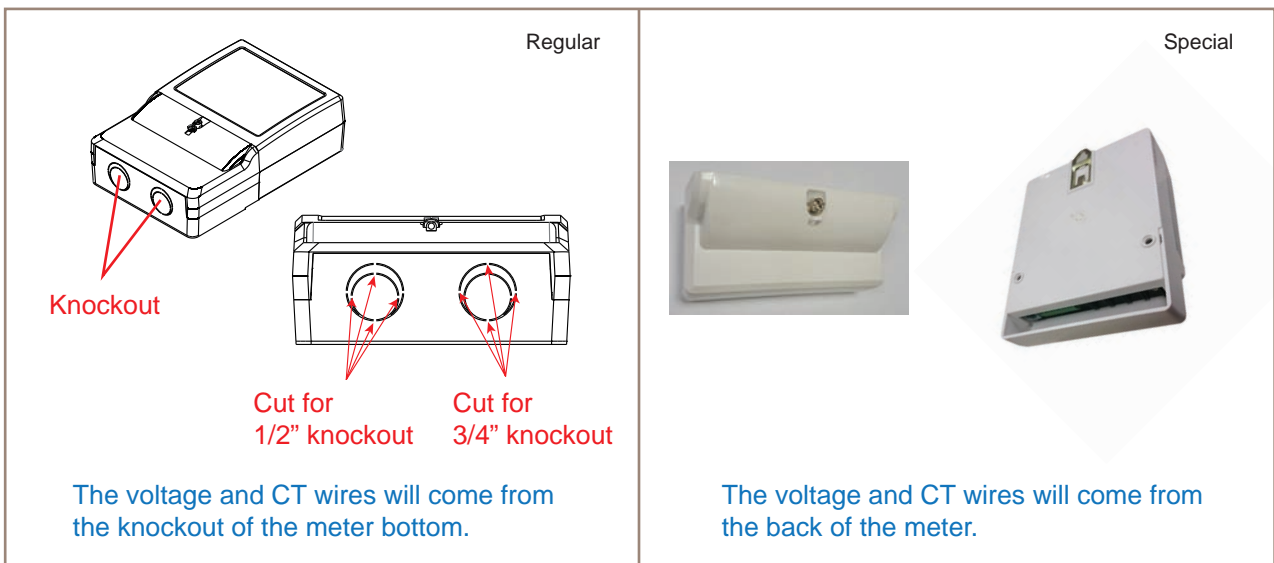
¹ Based on DAE solid-core CT @ PF=1

Current Sensors (CTs)



Note: Please see CT's datasheet

Terminal Cover



Note: Please specify if special terminal cover is needed when ordering

Ordering Code

Configurations	KIT Ordering Code	Amp	KIT Includes	Polaris Model NO.	CT Model NO.
120V 1- Phase, 2W	P102-200 KIT	200A	1 meter + 1 split-core CT	P103-200	CT-200S or CT-200SB
	P102-400 KIT	400A		P103-400	CT-400S
	P102-600 KIT	600A		P103-600	CT-600S
	P102-200-S KIT	200A	1 meter + 1 solid-core CT	P103-200	CT-200D3
	P102-400-S KIT	400A		P103-400	CT-400D6
	P102-600-S KIT	600A		P103-600	CT-600D9
120/208-240V 1- or 2- Phase, 3W	P103-200 KIT	200A	1 meter + 2 split-core CTs	P103-200	CT-200S or CT-200SB
	P103-400 KIT	400A		P103-400	CT-400S
	P103-600 KIT	600A		P103-600	CT-600S
	P103-200-S KIT	200A	1 meter + 2 solid-core CTs	P103-200	CT-200D3
	P103-400-S KIT	400A		P103-400	CT-400D6
	P103-600-S KIT	600A		P103-600	CT-600D9
208-240V 1- Phase, 2W	P104-200 KIT	200A	1 meter + 1 split-core CT	P104-200	CT-200S or CT-200SB
	P104-400 KIT	400A		P104-400	CT-400S
	P104-600 KIT	600A		P104-600	CT-600S
	P104-200-S KIT	200A	1 meter + 1 solid-core CT	P104-200	CT-200D3
	P104-400-S KIT	400A		P104-400	CT-400D6
	P104-600-S KIT	600A		P104-600	CT-600D9

※ For water meter option add suffix "W" to the ordering code.

e.g. : P103-200W KIT